

# CAREER ADVISOR SCHOLARSHIP NEWS

*Published annually to update alumni and friends of Florida State University about career advisor scholarships.*



## News and Views

*by Bob Reardon, Ph.D.*

Welcome to another edition of Career Advisor Scholarship (CAS) News. According to my unofficial records, our scholarship funds in September 2016 were \$495,100. We awarded \$19,050 in scholarships this year to 9 students. In the past 21 years, we have awarded \$210,343 in 134 scholarships to 88 different students. We now have 181 contributors who have made 472 gifts.

Although the market was not kind to our funds this year, the total endowment is almost the same this year because a new fund, The Dr. Janet G. Lenz Endowed Scholarship Fund, was announced at the Society for Vocational Psychology meeting at FSU in May. Details about this 7th fund are provided in the next section.

Remember—a gift to our endowed scholarship funds lives on—“it keeps on giving.” Only 4% of the interest earned from a gift is made available each year for scholarships; the remainder, along with the original gift, will contribute to another scholarship in the future.

As in the past, I “challenge” those of you who have received a career advisor scholarship to make a gift to these funds. I’ll match whatever you contribute up to \$300. This scholarship program is important to me because so much of my personal and professional life is connected to it in varied ways.

Go Seminoles!

“ I ‘challenge’ those of you who have received a career advisor scholarship to make a gift of these funds. I’ll match whatever you contribute up to \$300. ”

## How We’re Doing

Bobkin Fund (No. 01952). The Bobkin Fund was established in 1995 by Sandy and Randy Barker of Richmond, Virginia, and named for Sandy’s mother, Alyce B. Bobkin. This fund is operating currently with \$24,443 from 6 contributors.

Career Advisor Alumni Scholarship Fund (No. 01953). This fund was established in 2001 and has \$50,373 with gifts from 42 contributors.

Peterson Fund (No. 01955). The Peterson Fund was established in 1995 by Mike and Jean Shahnasarian of Tampa and named for Gary W. Peterson, Mike’s major professor. At the present time, this fund is operating with \$112,565 with gifts from 16 contributors. This fund is on the list for a state match of \$50,000 for further enhancement.

Rand Fund (No. 01959). The Rand Fund was established in 1996 by Herb Rand in honor of his late wife, Josie, a longtime music educator and FSU graduate. This fund is fully endowed at \$162,077.

Reardon Fund (No. 02129). The Reardon Fund was launched in late 2007 with a major gift from Mike and Jean Shahnasarian, which was further supported by 64 additional contributors. The fund is currently operating with \$75,186.

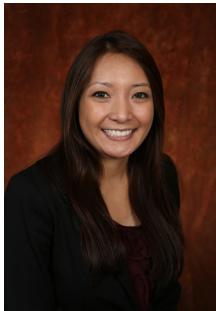
Driver Fund (No. 07595). This fund was established in 2013 in memory of Joel Ross Driver by his family and friends. Joel was one of our career counseling alumni and an assistant director in the Career Center. This fund is operating with \$34,966 from 60+ contributors.

Lenz Fund (No. 08132). This newest fund was initiated in May 2015 and endowed in December by an anonymous donor and 5 other friends of Dr. Lenz. It is currently operating with an endowment of \$35,530 and gifts from 8 persons. It will make its first scholarship award in 2017.

While the criteria for these 7 funds differ slightly, all seek to recognize and support students who have made a commitment to the career counseling area, have outstanding academic records and work histories, and have the potential to provide leadership in the broad area of career development and human resources.

## 2016 Fellows

After reviewing the fund criteria, the selection committee named nine students as recipients for 2016 awards. Here are brief profiles of the newest fellows. They are all presently working as career advisors in the FSU Career Center and pursuing degrees in Psychological and Counseling Services.



*Christine Edralin*

The fourth *Driver Fellow* is **Christine Edralin**, a 3rd year doctoral student in counseling and school psychology. She has a BA in psychology from the University of North Florida and an MS in general psychology from Nova Southeastern University. Her goal is to work in a university counseling center.

The 2016 *Rand Fellows* are **Zaraus Beard** and **Meredith McDowell**. Zaraus is a 1st year doctoral student in counseling and school psychology. He has an MS in community psychology from FAMU, and 5 years of experience as a counselor and adjunct professor. His goal is to become a faculty or staff member contributing to the field of career development. Meredith graduated cum laude with a BA in sociology from Samford University in Birmingham, AL, and a college counseling certification from UCLA. She is a 1st year MS/EdS student in career counseling with a special interest in working with youth in the foster care system.



*Zaraus Beard*



*Meredith McDowell*



*Alaina Rahaim*



*Leonardo Mata*

The newest *Peterson Fellows* are **Alaina Rahaim** and **Leonardo Mata**. Alaina graduated magna cum laude in human communication from the University of Central Florida in two years. Her goal is to work as a career counselor in a secondary school or college. Leonardo is a 1st year MS/EdS student in career counseling. He has a PhD in marine sciences and biotechnology from the University of Algarve in Portugal. With experience as a consultant, researcher, and entrepreneur, he plans to pursue an academic path or private practice.



*Briana Nelson*

**Briana Nelson** is the 17th *Career Advisor Alumni Fellow*. She has a BS in human resource education from Louisiana State University and is a 1st year MS/EdS student in career counseling. Along the way she was front end manager at a market in Central, LA. Her goal is to provide career services in a college or community setting.

The newest *Reardon Fellows* are **Francesca Scotese** and **Taylor Pentz**. Francesca has a BS in psychology and Spanish from FSU, graduating Phi Beta Kappa. She is a 1st year MS/EdS student in career counseling and plans to become a career counselor in a university setting. Taylor has a BA in psychology from East Carolina University and is a 2nd year MS/EdS career counseling student. He was president of the ECU career center liaison committee and his goal is to work in career services in a university.



*Francesca Scotese*



*Taylor Pentz*



*Kristen Haller*

The 20th *Bobkin Fellow* is **Kristen Haller**. She is a 2nd year MS/EdS student with a BS in family and child sciences from FSU. Her goal is to work in a high school or college setting.

Congratulations to these award recipients. As you can see, they are an impressive group and outstanding examples of the more than 20 graduate students pursuing coursework and practical training in counseling this year in the FSU Career Center.

## Past Fellows

Here are professional updates on the activities of *some* of our past fellows. **I believe their titles and affiliations validate the goals of this scholarship program.**

**Mary Buzzetta** (Alumni 2012, Bobkin 2013, Driver 2014, Reardon 2015) is psychology intern at Texas State University's Counseling Center, San Marcos.

**Shel McGuire** (Bobkin 2014) is guidance counselor at Jefferson County Middle High School in Monticello, FL.

**Laura Beth Lancaster** (Alumni 2014, Reardon 2015) is a counselor at Saddlewood Elementary in Ocala, FL.

**Sarah Schaefer** (Rand 2013) is a student services coordinator-career consultant in the School of Education, University of Wisconsin-Madison.

**Dr. Brittany (Melvin) Joslyn** (Peterson 2010, Alumni 2011) is an A. Dale Thompson Fellow in Executive Assessment & Coaching, Leadership Worth Following, Dallas.

**Rosemyrtle Jean Louis** (Rand 2013, Reardon 2014) is program coordinator in the Upward Bound Program at the University of South Florida.

**Leigh Eskin Mascolino** (Peterson 2011-12) is manager of career services in the College of Pharmacy, Ohio State University.

**Dr. Mary-Catherine McClain Riner** (Bobkin 2011, Peterson 2012) is teaching at Mercer University and providing services at Riner Counseling in Macon, GA.

**Tiffany Nelson** (Rand 2012) is a prevention counselor with counseling services at Saint Leo University (Florida).

**Julia Kronholz** (Bobkin 2012, Peterson 2014) is a predoctoral psychology intern in the counseling center, Georgia Tech.

**Tyler Finklea** (Driver 2013, Peterson 2014) is a postdoctoral fellow in Counseling and Psychological Services, Emory University, Atlanta.

**Christine (Richer) Certain** (Rand 2008) is program director for Children's Home Society of Florida.

**Maddie Foster** (Reardon 2012) is a STEM career counselor at the University of California at Santa Barbara.

**Emily Fiore** (Alumni 2013) is a student employment coordinator at the University of South Florida, Tampa.

**Pam (Wood) Watkins** (Rand 2013) is an associate director of student engagement at Florida State College at Jacksonville.

**Devan Coughlin** (Bobkin 2008, Reardon 2009) is now assistant director in career services at the University of South Florida.

**Brian Montalvo** (Rand 2005) is senior director of the career center at Florida Atlantic University in Boca Raton and a member of the NCDA Board.

**Liz Pawley** (Peterson 2013, Rand 2014) is the career counselor/internship coordinator, Graham Office of Career Management (College of Business), University of Kentucky.

**Greg Rosenberg** (Rand 2012) is MBA recruiting coordinator for leadership development with M&T Bank, Buffalo, NY.

**Rebecca (Hale) Coulter** (Rand 2012) is assistant director of pre-health and law advising, University of Virginia.

**Tracie Scott** (Rand 2000) is a training and coaching professional in Dallas.

**Shawn Utecht** (Rand 2007, 2008) is manager of Undergraduate and Graduate Career Counseling, College of Business, Colorado State University.

**Dr. Vincent Debili** (Rand 2014) is staff clinician at the University of South Florida's Counseling Center, Tampa.

**Shawn (Herbert) Winship** (Rand 1997) is a career guidance counselor, Lincoln High School, Tallahassee.

**Brook Serrano** (Rand 2007) is career coach and counselor for diverse populations at the Savannah College of Art and Design.

**Kathy (Dorsett) Ledwith** (Rand 2009) is a career and academic advisor at Pikes Peak Community College, Colorado Springs, CO.

**Inika (Pierre) Williams** (Peterson 2012) is a school counselor at Conoly Elementary School and the ESOL school administrator and referral coordinator in Tallahassee.

**Dr. Marissa (Brattole) Petralia** (Rand 2005-06) has opened Premier Psychology practice in Naples, FL.

**Jill Lumsden** (Rand 1998, 1999) is deputy program manager, spouse education and career opportunities program, with Zeiders Enterprises and The New School.

**Dr. Sarah Hartley** (Rand 2003-04, Peterson 2005) is program director, Primary Care-Mental Health Integration, Salem VA Medical Center, Virginia; also the co-lead in this area for all VA hospitals in VA/NC.

**Haley Foutch** (Rand 2011, Bobkin 2010) is a career coach for the University of Phoenix and CareerArc, and associate faculty with the University.

**Katie Meyer-Griffith** (Bobkin 2005, Rand 2001-2004) is associate director of graduate career services and strategic initiatives at the University of Tampa.

**Dr. Debbie (Norris) Osborn** (Bobkin 1996) is associate professor in Psychological and Counseling Services at FSU.

**Kateena James** (Bobkin 2007) is an independent educational consultant and career counselor at Doors of Opportunity in Houston.

**Mark Colvenbach** (Rand 2001) is the career services director at the University of Tampa.

**Emily Kennelly** (Alumni 2010) is senior assistant director for career advising and counseling in the FSU Career Center.

**Yas (Djadali) Hardaway** (Rand 2000) is executive director of career services and adjunct faculty in psychology, Graduate School of Education and Psychology, Pepperdine University.

**Dr. Sara (Cummings) Bertoch** (Rand, 2006, Peterson, 2007-2008, Reardon, 2009) is a rehabilitation psychologist, Spinal Cord Injury at Brooks Rehabilitation in Jacksonville.

**Dr. Stefanie (Mihalopoulos) Coppes** (Peterson 2008) is owner at Coastal Neuropsychology, Clearwater.

**Amy (Johnson) David** (Alumni 2009, Reardon 2010) is career counselor and assistant director, Graduate Career Services, Gerald R. Ford School of Public Policy, University of Michigan.

**Dr. Emily Bullock-Yowell** (Peterson 2002-2003, Rand 2004) is an associate professor in counseling at the University of Southern Mississippi.

**Sarah Clark** (Bobkin 2004, Alumni 2005) is the assistant director in prehealth advising with the career center at Emory University and pursuing an EdD at UGA.

**Dr. Liz Ruff McHugh** (Alumni 2004, 2007; Rand 2005, 2008) is a psychologist for CHE Senior Psychological Services in Manhattan and Queens providing geropsychological services.

**Conquaya James** (Rand 2002) is the assistant director for career development at Georgia State University, Atlanta.

**Dr. Cassandra Smisson** (Alumni 2006) is a clinical psychologist with Smisson Psychology Services in Houston.

**Adrian Fuller, Jr.** (Rand 2011) is an educator/administrator/counselor with Seminole County Public Schools in Sanford, FL.

**Dr. Darrin Carr** (Peterson 2000, Rand 2001) is clinical assistant professor of psychology at Indiana University-Purdue University, Columbus.

**Dr. Casey Dozier** (Alumni 2008, Rand 2009) is program director for career advising and counseling in the FSU Career Center.

**Dr. Elisa Rudd** (Rand 1998) is a licensed clinical psychologist with Insight Psychological Services, LLC, in Portland, OR.

**Dr. Jake Galles** (Rand 2010, Reardon 2011) is a licensed psychologist with Utopia Wellness in Tampa.

**Erin Harvey Bennett** (Rand 2011) is a career counselor at the University of Tennessee at Knoxville.

**Dr. Julia (Panke) Makela** (Rand 2000, Peterson 2001) is associate director for assessment and research at the Career Center, University of Illinois @ Urbana-Champaign.

## How to Contribute

All seven CAS Funds welcome contributions. A gift of \$100 places your name on our Career Center contributor board.

Gifts can be made online at [foundation.fsu.edu](http://foundation.fsu.edu), or use the form below and mail your gift to:

The FSU Foundation, Inc., Innovation Park  
2010 Levy Avenue, Building B Suite 300  
Tallahassee, FL 32310-2739

Either way, be sure to provide the career advisor scholarship number for the designated fund. You can also use the handy self-addressed return envelope to make a donation.



The  
**Career Center**  
*linking futures*

Florida State University Career Center  
Dunlap Success Center, PO Box 3064162  
100 South Woodward, Tallahassee, FL 32306-4162  
Phone: 850.644.6431 | Fax: 850.644.3273  
[career.fsu.edu](http://career.fsu.edu)

-----Detach and Return Portion Below with Gift-----

Name \_\_\_\_\_ Date \_\_\_\_\_

Fund Name & No. \_\_\_\_\_

Amount \_\_\_\_\_

Thank you!